



## MT2 Module

### Product Key Features

#### MT2

**12/24 Volt DC multi-timer**

**0.59kg**

Tri-input/output timer module with on board configurable behaviour.

Possible configurations include I/O repeat, invert repeat, delayed repeat, inverse delayed repeat (with times configurable via jumper settings) timed latching and non-latching variants.

This unit is capable of switching up to 1amp DC per O/P, custom software is available on request, simply contact us with your specific requirements.

#### DIMENSIONS

PCB Only 77.4mm x 65.5mm x 19.3mm.

*Note Sizes are approximate only*

#### CONSTRUCTION

PCB Type Double sided PCB.

Connections Screw terminals

Mounting Method Fixing Tape or 4 x corner pillar mountings.

*(Pillars not supplied)*

#### TECHNICAL SPECIFICATION

Input Voltage	12V- 27.2V DC
Maximum Operating Current	50mA Typical
Minimum Current	24mA Typical
Relay Control on Board	1A Max

#### ADVANCED FEATURES

Three start inputs.

Adjustable delay times.

Three sets of clean relay contacts.

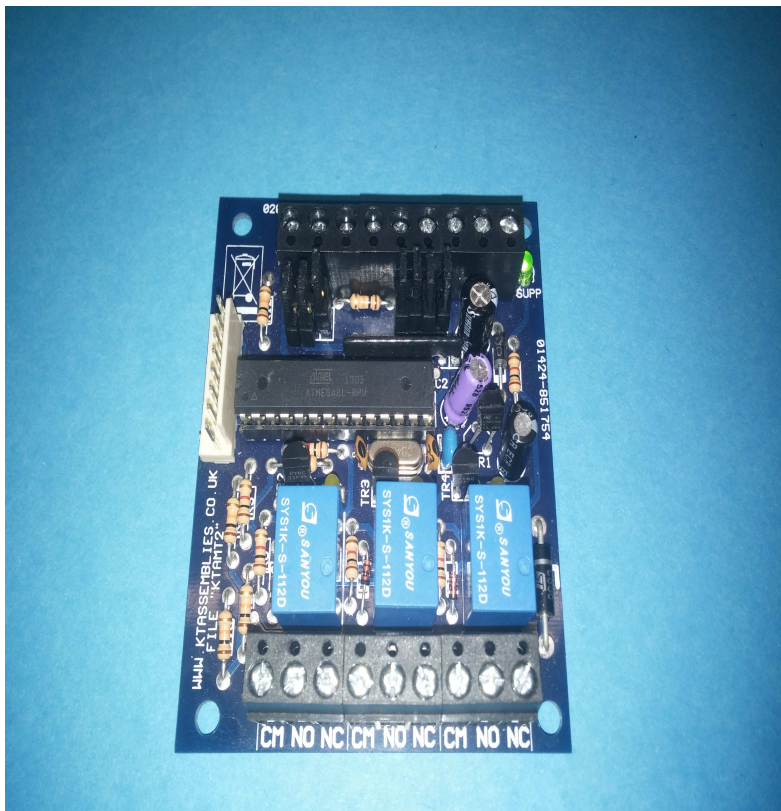
LED Indication for active condition for each input.

LED Indication for supply healthy.

# MT2 Adjustable Time Settings

## MT2 Timer Settings

Time Required in Seconds	Jumper 1	Jumper 2	Jumper 3	Jumper 4
0s	ON	ON	ON	ON
5s	ON	ON	ON	OFF
10s	ON	ON	OFF	ON
15s	ON	ON	OFF	OFF
20s	OFF	OFF	ON	ON
25s	ON	OFF	ON	OFF
30s	ON	OFF	OFF	ON
35s	ON	OFF	OFF	OFF
40s	OFF	ON	ON	ON
45s	OFF	ON	ON	OFF
50s	OFF	ON	OFF	ON
55s	OFF	ON	OFF	OFF
60s	OFF	OFF	ON	ON
65s	OFF	OFF	ON	OFF
70s	OFF	OFF	OFF	ON
75s	OFF	OFF	OFF	OFF



Note: This Picture is for illustration Purposes only and may not be the exact model described  
 KT Assemblies Ltd. 3 Maunsell Road, St Leonards On Sea, East Sussex. TN38 9NL Telephone 01424 851754  
[www.ktassemblies.co.uk](http://www.ktassemblies.co.uk)